



---

--	--	--	--	--	--	--

SCT CONFIDENTIAL

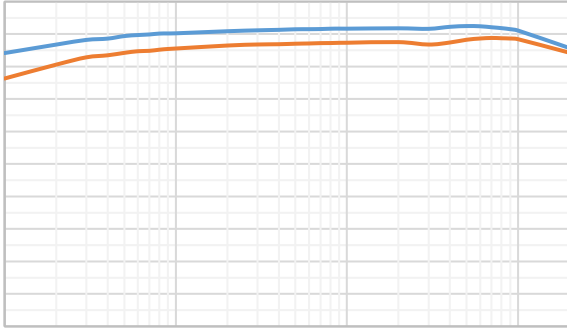
---

---



§

SCT CONFID



SCT CONFIDENTIAL

SCTCO

SCT CON

---

$$1 = 2 \times \left( \frac{1}{1.25} - 1 \right)$$

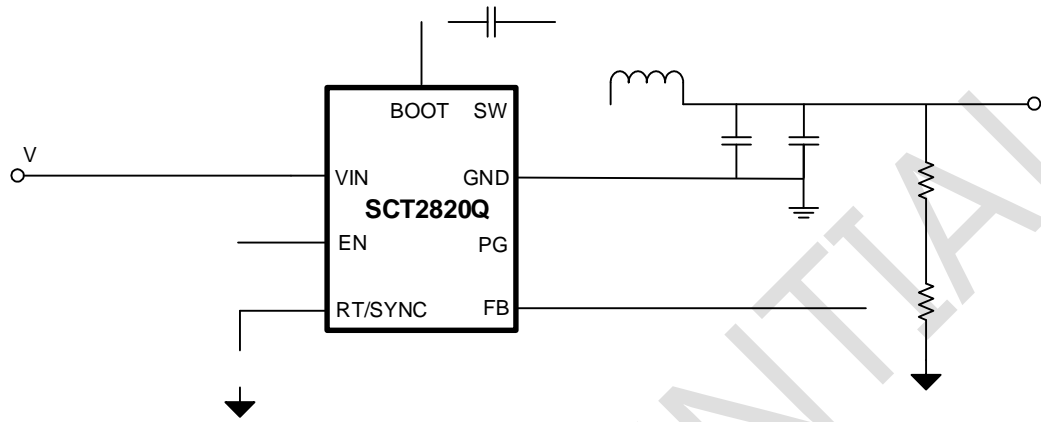
SCT CONFIDENTIAL



---

SCT CONFIDENTIAL

§




SCT CONFID

SCT CONFIDENTIAL

---

$$I_{\text{CINRMS}} = 0.5 I_{\text{OUT}}$$

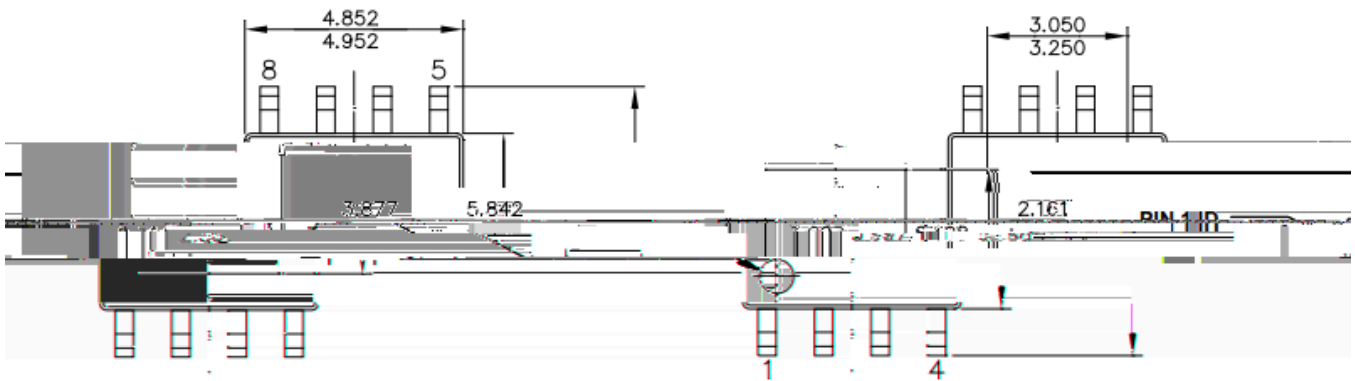
SCT CONFIDENTIAL



SCT CON

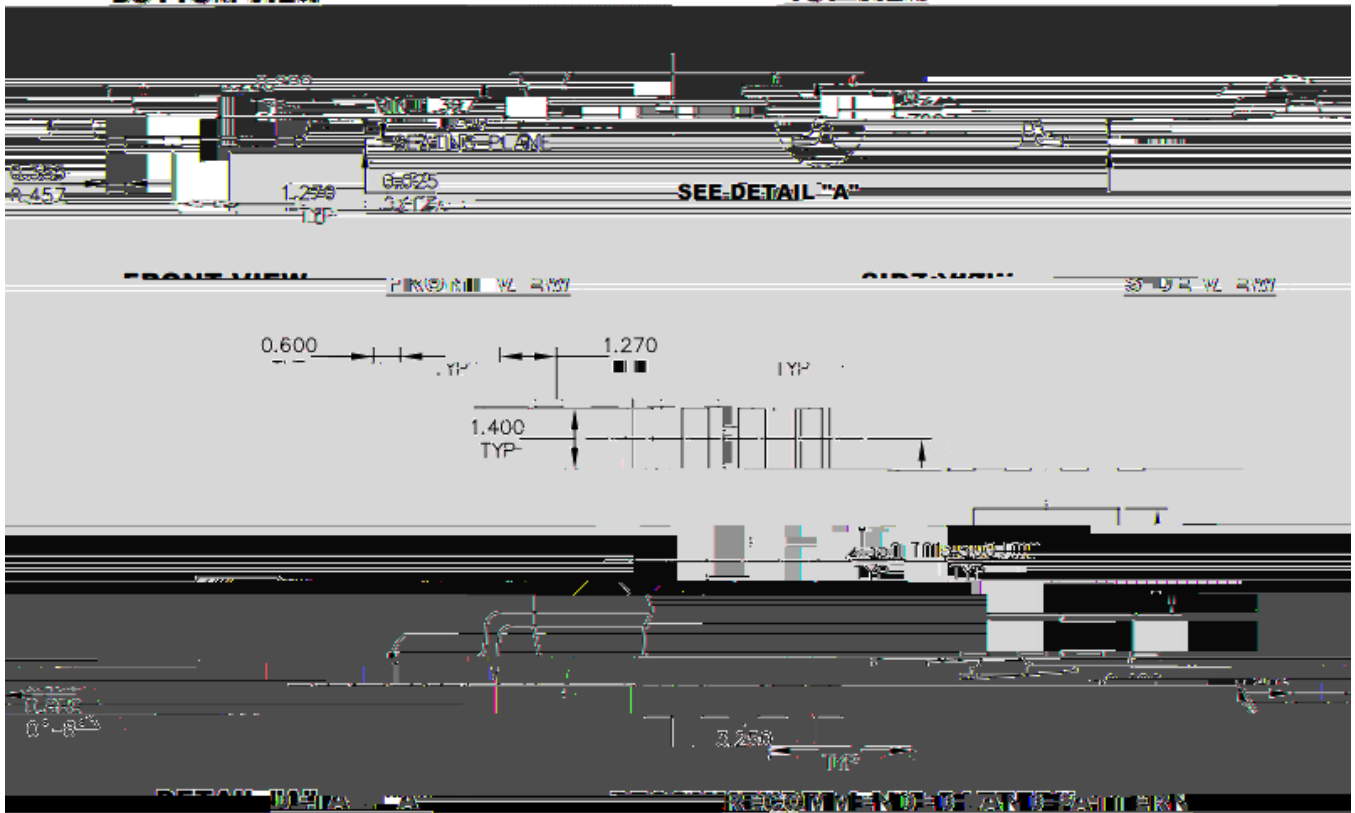
SCTC





**BOTTOM VIEW**

**TOP VIEW**



**NOTE:**

- 1) ALL DIMENSIONS ARE IN MILLIMETERS
- 2) PACKAGE LENGTH DOES NOT INCLUDE THE REFERENCE PROJECTIONS
- 3) PACKAGE WIDTH DOES NOT INCLUDE THE REFERENCE PROJECTIONS
- 4) ALL DIMENSIONS ARE IN MILLIMETERS
- 5) DRAWING REFERENCE TO OTHER DRAWINGS IS IN THE TITLE BLOCK
- 6) DRAWING IS IN SI UNITS

SCT CONFID